

Waste separating instructions



PAPER



The following waste items go in the red bin:

Egg cartons, notebooks/exercise books (without the plastic cover), magazines, cardboard, catalogues (without the plastic envelope), fruit trays (if made of cardboard), paper towels (clean), paper bags, paper carrier bags, cardboard boxes, frozen foods packaging (if made of coated cardboard), corrugated cardboard, advertising materials (without plastic envelope), newspapers, newsprint, journals



LIGHTWEIGHT PACKAGING



The following waste items go in the yellow bin:

Bottles, flasks (if made of plastic), beverage bottles (made of plastic, disposable), plastic bottles (disposable), fruit carrier nets (made of plastic, cotton), PET beverage bottles (disposable)



CLEAR GLASS



Please make sure that ONLY clear packaging glass goes in the clear-glass bin.



The following waste items go in the white bin:

Clear bottles, flasks, flacons (if made of glass), clear glass bottles (disposable), clear gherkin jars, clear storage jars, clear cosmetics packaging, clear cosmetics flasks (if made of glass), clear jam jars, Rex glasses



STAINED GLASS



The following waste items go in the green bin:

Stained glass, coloured bottles, flasks, flacons (if made of glass), coloured glass bottles (disposable), coloured gherkin jars, coloured storage jars, coloured cosmetics packaging, coloured cosmetics flasks (if made of glass), coloured medicine bottles

Please make sure that ONLY coloured packaging glass goes in the stained glass bin.



BIOLOGICAL WASTE

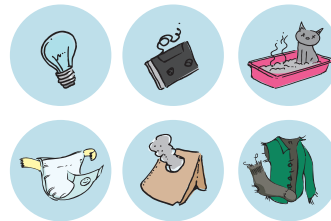


The following waste items go in the brown bin:

Branches, banana skins, pruned twigs (shredded), flowers, flower wastes, eggshells, windfall, garden waste, hedge trimmings, hay, coffee filters (with coffee dregs), coffee grounds, coffee dregs, kitchen waste, kitchen rolls, kitchen paper (dirty), fallen leaves, fruit and vegetable waste, orange peels, lawn cuttings, brushwood (shredded), bark, shrub cuttings, teabags, tea filters, indoor plants, citrus fruit, sprigs



RESIDUAL WASTE



The following waste items go in the black bin:

Nappies (diapers), blister packaging, flowerpots, leftover food, bottles, flasks, flacons (if made of ceramic), meat, meat leftovers, foils and sheets (packaging), photographs, filament lamps (but not energy-saving lamps), hair, sweepings, sanitary products (used), cat litter, bones, plastic packaging, plastic caps, plastic toys, foam packaging, Styrofoam peanuts, Styrofoam packaging, Tetra Pak, carrier bags (if made of plastic), tubes (if made of plastic, empty)



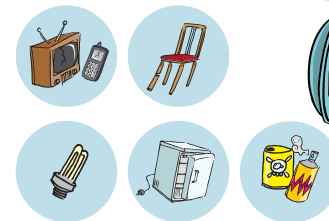
METAL PACKAGING



The following waste items go in the blue bin:

Aluminium cans, tin cans, aluminium foil, crown caps, screw tops (if made of metal), spray and aerosol cans (completely emptied), yoghurt tub lids, coffee packaging, food cans, meal trays made of aluminium, tubes (if made of metal)

LOCAL RECYCLING CENTRE



The following waste items must be taken to the local recycling centre and not disposed of with the household waste



The following waste items go to the local recycling centre

Demolition timber/wood, rechargeable batteries, out-of-date medicines, out-of-date drugs, used cooking oil and fat, aluminium rims, batteries, button cells, monitors, computer screens, fertilizer bags (empty), electronic waste, energy-saving lamps, spray cans (if not completely empty), paint buckets (plastic, completely emptied), thermometers, deep frying fat and oil, glue, adhesive, adhesive tubes, adhesive containers, crates (if made of wood), toner cartridges (completely emptied)

Saubermacher